



WOOLADDICTS

#3 2066.0001

BY LANGYARNS



WOOLADDICTS

BY LANGYARNS

**LET
THE RHYTHM
OF THE
NEEDLES...**





**WE OFFER YOU THE MOST PERFECT RAW MATERIAL FOR YOUR CRAFT(S).
THE REST DEPENDS ON YOU.**



RESPECT

Wear your own statements - create RESPECT!
A beautiful warm blended thread; mixture of wool and alpaca super fine. To make it extra strong for all day long.

ITEM# 1025



TRUST

TRUST us! - It's soft, 100% squishy and not only meant for daytime. Splendid alpaca and merino combined, to keep you warm even after the sun sets.

ITEM# 1026



FAITH

This yarn was designed to have FAITH in all crafty adventures. Lots of merino to spark the creative light in you. To keep the crafter's heart always glow.

ITEM# 1027

– MAKE IT HAPPEN! –

A NEW SEASON WITH NEW COLORS AND FEELINGS...



Don't create but break boundaries! Be fearless and face your biggest fears. In other words: "Be a force!" Inhale deeply and let it all out. Go outside, seek new crafting adventures and make them all seem to be worthwhile. Live in the present; if you're only wondering about what could have been, you'll be forever stuck. Dare to push yourself; to go beyond. If you change nothing then nothing changes. Let your hands create where your mind often wanders. Knitting is a mindful process where beautiful souls create their purest form of poetry. It's not about clothes. It's all about creating your own statements to wear. So, let's create from sunrise to sunset.

THE REST DEPENDS ON YOU – WOOLADDICTS.

WOOLADDICTS

wild heart



wild heart

WILD HEART

GO OUTSIDE...

SEEK NEW

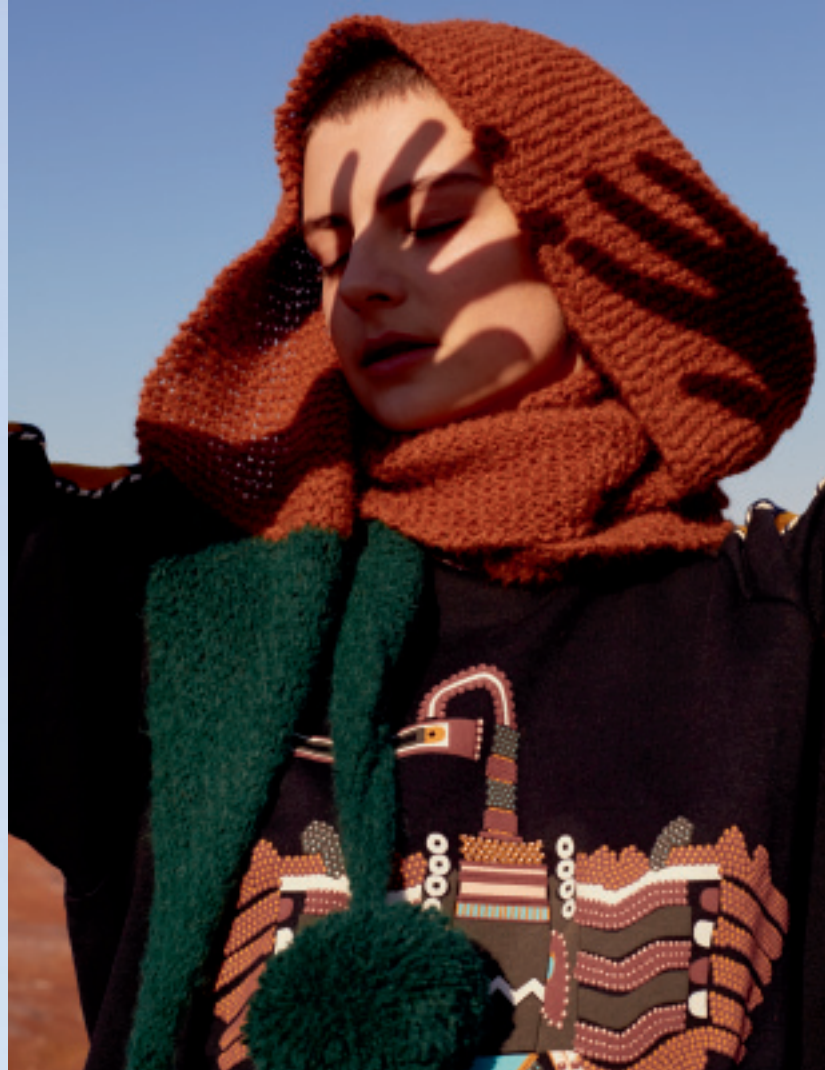
CRAFTING ADVENTURES

wild heart

SHE'S A **FORCE**



FAITH. THIS HAT HAS SOME FIERCE COLOR BLOCKING, TO REALLY SHOW YOUR TRUE COLORS. BE SELFISH. LOVE YOURSELF!
SELFISH LOVER HAT PATTERN # 262-001-001



WATER. MORE ATTITUDE PLEASE!
THIS TWO-TONED SHAWL WITH PERFECT POM-POMS
CREATES THAT PERFECT BOYISH BAD LOOK.
CAUSE GIRLS JUST WANT TO HAVE FUN.

BOYISH BAD SCARF
PATTERN# 262-002-001

wild heart



FIRE. THE STRUCTURE OF THIS BEAUTIFUL SWEATER MAKES YOU WANT TO SET YOUR STANDARDS EVEN HIGHER. DON'T FORGET... YOU ARE GOLDEN, ALWAYS.

BE GOLDEN SWEATER PATTERN# 262-003-001

wild heart



wild heart

SHE HAS AN UNTAMABLE HEART.

**SHE SEEKS
NEW ADVENTURES.**



AND OFTEN

DOESN'T KNOW

WHERE TO START...

WATER. EVERYBODY HAS THAT ONE PIECE WITH EXTRA SPECIAL MEMORIES. THIS SWEATER CARRIES ALL YOUR PAINS AND GAINS. YOU WILL NOT FEEL UTTERLY OKAY WHILE WEARING... YOU FEEL AT EASE AGAIN.

TO-EASE-SORROW SWEATER PATTERN# 262-004-001





BUT, SHE GETS OUT IN THE OPEN



TRUST. SHE IS AS STRONG AS A VOLCANO. SHE LETS ALL WILD HEARTS MELT LIKE LAVA. THE "LIKE LAVA" CARDIGAN MAKES YOUR INNER LIGHT BRIGHTER AND YOUR SPIRIT FIERY. HOLD ONTO AND NEVER LOSE GRIP.

LIKE LAVA CARDIGAN PATTERN# 262-005-001



FIRE. NOT ALL ROADS LEAD TO GOOD THINGS. BUT THIS ONE DOES! THIS HEADBAND IS BIG ENOUGH TO TAKE WITH YOU ON GREAT ADVENTURES. TO WANDER ON THE ROCKY ROADS. **ROCKY ROADS HEADBAND** PATTERN# 262-006-001

SHE LETS HER FEET WANDER AWAY

FIRE. INVENTED FOR FRESH AUTUMN DAYS WITH LITTLE SUNSHINE. COLD WINTER MORNINGS WITH LONG WALKS. A PERFECT CAPE WITH A SPLIT AT THE SIDE. JUST ENOUGH REASONS TO WEAR IT.

wild heart

RANDOM ROCKS CAPE PATTERN# 262-007-001





TRUST. THAT EVERLASTING FEELING TO CATCH UP WITH THE OCEAN. BENDABLE, STRONG, AND SALTY AT HEART. JUST AN ORDINARY SWEATER WITH GREAT EXPECTATIONS.

SALTY SPIRIT SWEATER PATTERN # 262-008-001

wild heart

RESPECT. PROOF THAT GAITERS AREN'T ONLY WEARABLE INDOORS. COMBINE THEM WITH LIGHT MATERIALS SUCH AS SILK OR SATIN AND YOU SEE THAT EVERY NIFTY KNITTER CAN ROCK THESE GAITERS.

NIFTY KNITTER GAITERS PATTERN# 262-010-001

LOVE. CLASSIC SWEATERS NEVER GO OUT OF STYLE. USING THE RIGHT COLOR CAN LIFT YOUR WHOLE OUTFIT. CREATED FOR ALL STYLE HUNTERS WHO NEVER LOSE TRACK OF FASHION.

STYLE HUNTER SWEATER PATTERN# 260-009-001

wild heart



FOR SHE IS A

WILD HEART

THAT CAN'T BE TAMED ...





TRUST. "SACRED SAGE", BANISHES YOUR FEARS, CLEARS YOUR MIND AND MAKES ALL OBSTACLES SEEM TO BE EASY. IT MAKES YOU FEEL READY FOR MORE CRAFTING ADVENTURES.

SACRED SAGE SWEATER PATTERN# 262-011-001

wild heart



FAITH. YOU ARE IMMEDIATELY DRAWN TO THE MIDDLE OF THIS BOHEMIAN SHAWL. IT ONLY TAKES ONE CABLE AND SOME FRINGES TO REALLY GET THAT BOHO FEELING.

BOHO SOUL SHAWL PATTERN# 262-012-001

wild heart





FAITH. MAYBE SHE HAS THE WILDEST HEART OF ALL. NO CRAFTING ADVENTURE IS TOO DIFFICULT. SHE BELIEVES STRONGLY IN WEARING STATEMENTS - NOT CLOTHES.

WILD WANDERESS SWEATER PATTERN# 262-013-001

wild heart



I'LL GO ANYWHERE...

SOME CALL IT KNITTING....

I CALL IT

CREATING STATEMENTS.



LOVE. THERE LIES A STORM AWAITING IN HER EYES. COLLIDING WAVES RUNNING PERFECTLY AROUND HER HEAD. LIKE WICKED WAVES THAT SOON BE CATCHED.
WICKED WAVES **HEADBAND** PATTERN# 262-014-001

LOVE. AGAIN, A WONDERFUL SWEATER THAT'S NOT SO DIFFICULT TO MAKE.
IN ORDER TO BE CREATIVE AND TO FEEL FREE, YOU'LL HAVE TO RISK IT ALL.

RISKY REDEEMER SWEATER PATTERN# 262-015-001

wild heart



FIRE. THIS FUNNY PILOT HAT MAKES YOU LAUGH A LITTLE LOUDER. DON'T TAKE EVERYTHING SO SERIOUSLY. NEVER LOSE HOPE TO CREATE YOUR ULTIMATE PIECE. DREAM ON AND ON.
DREAM ON HAT PATTERN# 262-016-001

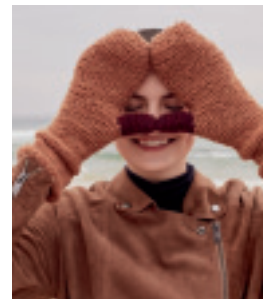
wild heart



AIR. IT ONLY TAKES ONE PAIR OF GLOVES TO MOVE MOUNTAINS. WHAT ARE YOU WAITING FOR?

MOVING MOUNTAINS GLOVES

PATTERN# 262-017-001



...AS LONG AS MY
CRAFTER'S HEART FIND CONNECTION...



NIFTY KNITTER • RESPECT

42% merino wool,
30% alpaca, 28% nylon

Pattern# 262-010-001



SACRED SAGE • TRUST

55% alpaca,
45% extrafine merino wool

Pattern# 262-011-001



BOHO SOUL • FAITH

77% extrafine merino wool,
23% nylon

Pattern# 262-012-001



RANDOM ROCKS • FIRE

98% extrafine merino wool,
2% nylon

Pattern# 262-007-001



SALTY SPIRIT • TRUST

55% alpaca,
45% extrafine merino wool

Pattern# 262-008-001



STYLE HUNTER • LOVE

92% extrafine merino wool,
8% nylon

Pattern# 262-009-001



TO-EASE-SORROW • WATER

100% baby alpaca

Pattern# 262-004-001



LIKE LAVA • TRUST

55% alpaca,
45% extrafine merino wool

Pattern# 262-005-001



ROCKY ROADS • FIRE

98% extrafine merino wool,
2% nylon

Pattern# 262-006-001



SELFISH LOVER • FAITH

77% extrafine merino wool,
23% nylon

Pattern# 262-001-001



BOYISH BAD • WATER

100% baby alpaca

Pattern# 262-002-001



BE GOLDEN • FIRE

98% extrafine merino wool,
2% nylon

Pattern# 262-003-001



DREAM ON . FIRE

98% extrafine merino wool,
2% nylon

Pattern# 262-016-001



WILD WANDERESS . FAITH

77% extrafine merino wool,
23% nylon

Pattern# 262-013-001



WICKED WAVES . LOVE

92% extrafine merino wool,
8% nylon

Pattern# 260-014-001



RISKY REDEEMER . LOVE

92% extrafine merino wool,
8% nylon

Pattern# 262-015-001



MOVING MOUNTAINS . AIR

84% extrafine merino wool,
16% nylon

Pattern# 262-017-001

WOOLADDICTS

BY LANGYARNS

city secrets

IN A BIG CITY.
YOU ONLY



HAVE
TO SEEK YOURSELF
AND SOME
FINE YARN.

CITY SECRETS





MORE SELFLOVE, GIRL!

RESPECT. THIS BEAUTIFUL HAT FULL OF CABLES KEEPS SURPRISING YOU. IT'S FULL OF MARVELLOUS MYSTERIES AND WITH AN OPEN TOP ENOUGH SPACE FOR MORE.
MARVELLOUS MYSTERY HAT PATTERN# 262-018-001



FAITH. AS BEAUTIFUL AS THE UNIQUE TILES WE FOUND IN LISBON.
EVERY STITCH IS DIFFERENT, UNIQUE BUT WHOLE AS ONE.

UNIQUE MOSAIC CROCHET SCARF PATTERN# 262-019-001

city secrets



YOU ARE YOUR LONGEST COMMITMENT

AIR. THE SWEATER IS DESIGNED FOR THE CITY LIFE. FOR DAYS,
FOR NIGHTS; "THIS SWEATER IS ALWAYS A GOOD IDEA!"
CITY LIFE SWEATER PATTERN# 262-020-001

city secrets



ONLY
NEW
AND
INSPIRING ADVENTURES
FOR ME



TRUST. SHE LIVES IN HER OWN CREATIVE BUBBLE.
IT'S JUST TOO CUTE TO NOT FALL IN LOVE WITH THE "LOVEY-DOVEY" HAT.
LOVEY-DOVEY HAT PATTERN# 262-021-001

city secrets





WATER. YOU WILL BE EASILY TRICKED BY THIS "CUTE CHARMER" SWEATER.
TRICKED WITH ONLY WANTING TO CREATE MORE THAN ONE. IT'S BASIC WEAR AT ITS BEST.

CUTE CHARMER SWEATER PATTERN# 262-022-001

city secrets

BE CRAFTASTIC!



WOOLADDICTS

BY LANGYARNS

KNITTING

IS A MINDFUL PROCESS

WHERE BEAUTIFUL SOULS CREATE THEIR

PUREST FORM OF POETRY.

WATER. HER OUTFIT HAS FUN ALL OVER! "PERFECT POETRY", IS NOTHING MORE THAN A PERFECT RESULT OF KNITTING IN ITS PUREST FORM. PLUS, EASY TO COMBINE WITH STATEMENT WEAR.

PERFECT POETRY SWEATER PATTERN# 262-023-001

city secrets



EARTH. EVERY CRAFTER HAS ITS OWN GUILTY PLEASURE. OUR CONFESSION:
WE KEEP OUR DESIGNS SIMPLE, ON TREND, EASY TO WEAR AND HARD TO FORGET.
CRAFTY CONFESSOR SNOOD PATTERN# 262-024-001





FAITH. IT'S NOT ABOUT WEARING BIG STATEMENTS. SOMETIMES LITTLE STATEMENTS ARE LOUD ENOUGH. THE "TOUGH TIMES" WRISTLETS, DON'T ONLY WARM YOUR HANDS BUT ALSO YOUR HEART.

TOUGH TIMES WRISTLERS PATTERN# 262-025-001

WHEN
IN
DOUBT

**CAST
ON!**

city secrets



WHAT SPARKS THE
CREATIVE LIGHT
IN YOU?

RESPECT. BEFORE YOU START A NEW PROJECT, THINK OF WHAT WILL SPARK THE CREATIVE LIGHT IN YOU? WHAT ARE YOUR DEEPEST HIDDEN FEELINGS? **HIDDEN FEELINGS** SWEATER
PATTERN# 262-026-001

city secrets





**CRAFTING IS
CREATING
NEEDS THAT
NOT YET EXIST.**



RESPECT. THIS JACKET IS MORE THAN MEETS THE EYE. CLASSY, CASUAL AND SPORTY ARE JUST SOME WORDS THAT POP IN MIND. BUT MOST OF ALL, SHE IS WEARING A SEDUCTIVE SECRET.

SEDUCTIVE SECRET JACKET PATTERN# 262-027-001

KNITTING IS MY
EASY ESCAPE.



TRUST. THIS WAISTCOAT WITH HOOD WAS MEANT FOR EASY ESCAPES.
FULL OF TRUST ON HER WAY SEEKING FOR SOME FINE YARN.

EASY ESCAPE WAISTCOAT WITH HOOD PATTERN# 262-028-001





RESPECT. USE THIS SLIPOVER TO UPDATE YOUR OUTFIT.
TO BEAT THAT MONDAY (MORNING) FEELING.

ROUGH ROOTS SLIPOVER PATTERN# 262-029-001



SEDUCTIVE SECRET • RESPECT

42% merino wool,
30% alpaca, 28% nylon

Pattern# 262-027-001



CRAFTY CONFESSOR • EARTH

50% alpaca,
35% acrylic, 15% wool

Pattern# 262-024-001



LOVEY-DOVEY • TRUST

55% alpaca,
45% extrafine merino wool

Pattern# 262-021-001



MARVELLOUS MYSTERY • RESPECT

42% merino wool,
30% alpaca, 28% nylon

Pattern# 262-018-001



EASY ESCAPE • TRUST

55% alpaca,
45% extrafine merino wool

Pattern# 262-028-001



CUTE CHARMER • WATER

100% baby alpaca

Pattern# 262-022-001



UNIQUE MOSAIC • FAITH

77% extrafine merino wool,
23% nylon

Pattern# 262-019-001



ROUGH ROOTS • RESPECT

42% merino wool,
30% alpaca, 28% nylon

Pattern# 262-029-001



HIDDEN FEELINGS • RESPECT

42% merino wool,
30% alpaca, 28% nylon

Pattern# 262-026-001



PERFECT POETRY • WATER

100% baby alpaca

Pattern# 262-023-001



CITY LIFE • AIR

84% extrafine merino wool,
16% nylon

Pattern# 262-020-001

miss behave

SUNSET

...IS MY FAVORITE COLOR



MISS BEHAVE

LET'S
CREATE
FROM

SUNRISE





TRUST. STOP AND STARE! SHE IS READY TO CONQUER THE CITY NIGHTS WEARING THIS FAVORABLE "CITY LIGHTS" HAT.

CITY LIGHTS HAT PATTERN# 262-030-001



TO **SUNSET**

WATER. SHE HAS THAT EVERLASTING GLOW, A TWINKLING IN HER EYES, AS IF SHE IS A SHOOTING STAR. SHE IS NOTHING MORE NOTHING LESS. THIS CARDIGAN MAKES HER SHINE.

SHOOTING STAR **CARDIGAN** PATTERN# 262-031-001



TRUST. NOT SOME TYPICAL EASY KNITTED SHAWL YOU HAD IN MIND. THE TYPE OF:
"ALL SPOTLIGHTS ON ME": ADDING FRINGES TO MOVE AS A BEAUTIFUL BLIZZARD.

SCARF PATTERN# 262-032-001

ALL SPOTLIGHTS ON ME!



miss behave

WOOLADDICTS

BY LANGYARNS

DON'T COUNT
YOUR STITCHES
COUNT YOUR

LUCKY STARS

EARTH. NOT ONE SUNSET IS THE SAME.
WE'VE SEEN MANY DURING OUR STAY IN PORTUGAL.
BUT KIANA WORN THE MOST SOOTHING ONE OF ALL.

SOOTHING SUNSET SWEATER PATTERN# 262-033-001





miss behave

miss behave

PROCRAFTINATE!

UNTIL YOU
CAN'T CRAFT
NO MORE.

FIRE. WE REALLY LOVE COLOR COMBINATIONS AND DON'T FORGET BIG KNITS! BIG KNITS MAKE PROCRAFTINATING EASIER.
PROCRAFTINATOR SWEATER PATTERN # 262-034-001



A woman with dark hair, wearing a maroon ribbed turtleneck sweater, is looking upwards and to the right with a slight smile. Her hand is raised near her face. The background is dark with several large, out-of-focus, warm-toned circular lights (bokeh) in the foreground and background.

WHEN THE **SUN**
GOES DOWN ...

AIR. SHE IS A DRAMATIC DREAMER. HER HEAD IN THE CLOUDS ABOVE THE STARS,
IMAGINING HER NEXT CRAFT PARTY. WEARING A CLOUDY SWEATER WITH A BEAUTIFUL CABLE AT THE SIDE.
DRAMATIC DREAMER SWEATER PATTERN# 262-035-001

miss behave



miss behave



LET'S PARTY!

TRUST. TRUST ME! THE "DEVOTED DANCER" SWEATER IS EASY TO START WITH. YOU'LL BE DANCING YOUR HAPPY DANCE IN NO TIME.

DEVOTED DANCER SWEATER PATTERN# 260-036-001



TRUST. THE TYPE OF CARDIGAN WHICH MUST BE BY YOUR SIDE, ALWAYS.
IT'S REALLY SOFT, WARM AND GIVES YOU CONFIDENCE EVEN ON HARD DAYS.

LOSING LOVER SWEATER PATTERN# 262-037-001

STREET DANCE



FAITH. IT'S THE FIRST TIME WE ADDED A COOL TUNIC TO OUR WOOLADDICTS COLLECTION. THIS TUNIC IS DESIGNED FOR LONG AND MAD MIDNIGHTS FULL OF ADVENTURES. THIS STRUCTURED TUNIC HAS IT ALL!

MAD MIDNIGHTS **TUNIC** PATTERN# 262-038-001

RESPECT. ANOTHER STUNNING SLIPOVER TO MATCH YOUR FAVORITE PARTY OUTFIT.
THE ONE YOU WOULD WANT TO WEAR EVERY SEASON OF THE YEAR.
SHINY STUNNER SLIPOVER PATTERN # 262-039-001

miss behave



WOOLADDICTS

BY LANGYARNS



GO OUT AND MAKE IT HAPPEN!

EARTH. CREATED FOR REAL CRAFTERS WHO WANT TO MIS(S)BEHAVE. TO KEEP YOU WARM AT ANY TIME OF DAY.

MISS BEHAVE STOLE PATTERN# 262-040-001

NIGHT NIGHT!



SHINY STUNNER • RESPECT

42% merino wool,
30% alpaca, 28% nylon

Pattern# 262-039-001



DEVOTED DANCER • TRUST

55% alpaca,
45% extrafine merino wool

Pattern# 262-036-001



MISS BEHAVE • EARTH

50% alpaca,
35% acrylic, 15% wool

Pattern# 262-040-001



SOOTHING SUNSET • EARTH

50% alpaca,
35% acrylic, 15% wool

Pattern# 262-033-001



PROCRAFINATOR • FIRE

98% extrafine merino wool,
2% nylon

Pattern# 262-034-001



DRAMATIC DREAMER • AIR

84% extrafine merino wool,
16% nylon

Pattern# 262-035-001



CITY LIGHTS • TRUST

55% alpaca,
45% extrafine merino wool

Pattern# 262-030-001



SHOOTING STAR • WATER

100% baby alpaca

Pattern# 262-031-001



BEAUTIFUL BLIZZARD • TRUST

55% alpaca,
45% extrafine merino wool

Pattern# 262-032-001



MAD MIDNIGHTS • FAITH

77% extrafine merino wool,
23% nylon

Pattern# 262-038-001

**...ALWAYS GUIDE
YOUR
CRAFTER'S HEART.**





LANG
Y A R N S

Quality since 1867



7 611862 255175